

Vertical Balers

A broad range of balers to fulfill your specific needs

Bales Corrugated, Plastic, Newspaper, and other non-ferrous materials

Reduces waste and associated disposal costs

"Time under Pressure" produces a denser bale

Meets or exceeds ANSI Z245.5

Baler design ensures operator safety

TEFC high efficiency motor

Expert installation available

UL® and CUL® listed panels

Easy to operate

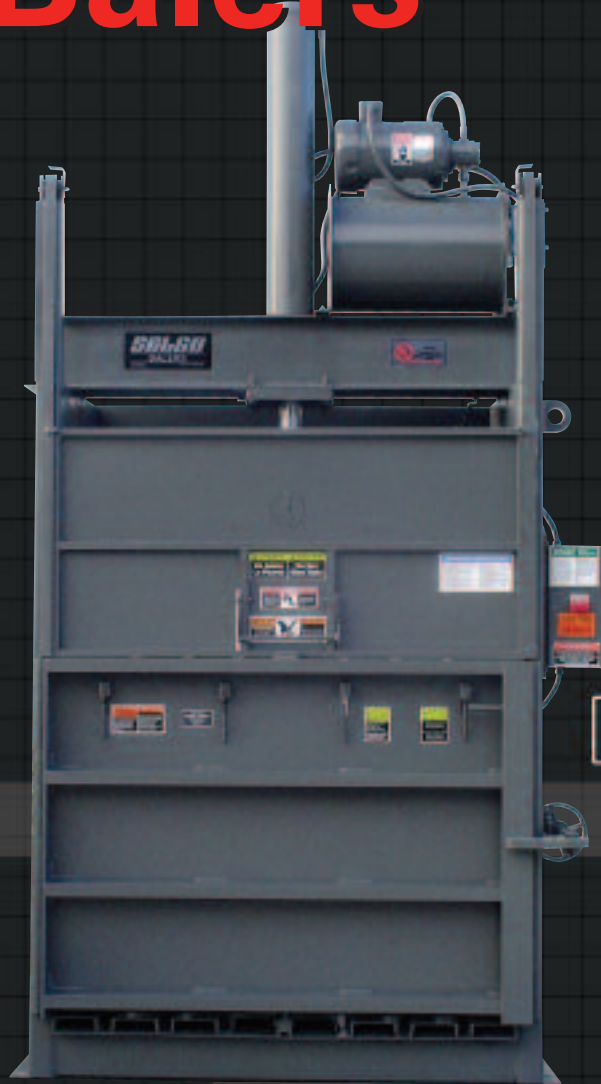
Operator safety video included to ensure safe operation

Soft-shift shockless hydraulic circuit provides longer life

Full hinge on main door provides durability

Semi-automatic bale ejection for easy bale ejection

Adjustable bale sizing on all models (3"-6" height range)



Harris



Harris

**Call today for
more information**

770-631-7290

800-373-9131

www.harriswaste.com

Harris Vertical Balers

Model Name

VDC-1

VS-6M

V-6

VNF-5

V5-XHD

V5-SLP

V5-HD EXP

V5-HD

Bale Size, in baler

Model	V5-HD	V5-SLP	V5-XHD	VNF-5	V-6	VS-6M	VDC-1
Length: in.(mm)	60 (1524)	60 (1524)	60 (1524)	60 (1524)	72 (1829)	72 (1829)	Crushed
Width: in.(mm)	30 (762)	30 (762)	30 (762)	30 (762)	30 (762)	42 (1067)	Drum Height
Height: in.(mm)	48 (1219)	33 (838)	48 (1219)	48 (1219)	48 (1219)	48 (1219)	6 - 8 (152-203)

Bale Weight (OCC)

Model	V5-HD	V5-SLP	V5-XHD	VNF-5	V-6	VS-6M	VDC-1
(lb)	900-1100	600-700	1350-1450	1300-1500	900-1200	900-1300	Varies with Drum
(kg)	(408-499)	(272-318)	(612-658)	(590-680)	(408-544)	(408-590)	

Cycle Time

Model	V5-HD	V5-SLP	V5-XHD	VNF-5	V-6	VS-6M	VDC-1
No Load (sec)	50	29	71	41	50	50	42

Motor Horsepower

Model	V5-HD	V5-SLP	V5-XHD	VNF-5	V-6	VS-6M	VDC-1
	10	10	15	15	10	10	5

Hydraulic Pressure (Max)

Model	V5-HD	V5-SLP	V5-XHD	VNF-5	V-6	VS-6M	VDC-1
(psi)	1,800	1,600	1,800	2,800	1,800	1,800	1,600
(BAR)	(124)	(110)	(124)	(193)	(124)	(124)	(110)

Platen Force Maximum

Model	V5-HD	V5-SLP	V5-XHD	VNF-5	V-6	VS-6M	VDC-1
(lb)	50,900	45,239	69,272	140,743	50,900	50,900	20,106
(kg)	(23,088)	(20,520)	(31,422)	(63,719)	(23,088)	(23,088)	(9,120)

Main Cylinder

Model	V5-HD	V5-SLP	V5-XHD	VNF-5	V-6	VS-6M	VDC-1
Bore: in.(mm)	6 (152)	6 (152)	7 (178)	8 (203)	6 (152)	6 (152)	4 (102)
Stroke: in.(mm)	48 (1219)	27 (686)	48 (1219)	54 (1372)	48 (1219)	48 (1219)	36 (914)

Hydraulic Pump Capacity

Model	V5-HD	V5-SLP	V5-XHD	VNF-5	V-6	VS-6M	VDC-1
gpm(lpm)	12 (45.4)	12 (45.4)	12 (45.4)	28.5/7.5 (108/28)	12 (45.4)	12 (45.4)	4.5 (17)

Oil Reservoir Capacity

Model	V5-HD	V5-SLP	V5-XHD	VNF-5	V-6	VS-6M	VDC-1
gal(L)	18 (68.1)	12 (45.4)	18 (68.1)	44 (166.6)	18 (68.1)	18 (68.1)	12 (45.4)

Feed Opening

Model	V5-HD	V5-SLP	V5-XHD	VNF-5	V-6	VS-6M	VDC-1
Width: in.(mm)	60 (1524)	60 (1524)	60 (1524)	60 (1524)	72 (1829)	72 (1829)	39 (991)
Height: in.(mm)	27 (686)	19.5 (495)	22 (559)	27 (686)	25 (635)	32 (813)	30 (762)

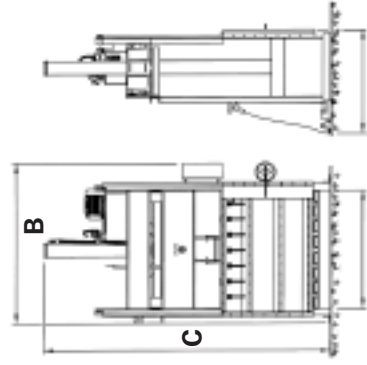
Shipping Weight

Model	V5-HD	V5-SLP	V5-XHD	VNF-5	V-6	VS-6M	VDC-1
(lb)	4,300	3,860	6,500	9,750	5,500	6,500	2,800
(kg)	(1,950)	(1,751)	(2,948)	(4423)	(2,495)	(2,948)	(1,270)

Performance Rates, Bale Weights, and Bale Densities are Subject to Moisture Content, Material Pre-bale Densities, Feed Rates, and Other Variables in Baling.

(SPECIFICATIONS ARE SUBJECT TO CHANGE WITHOUT NOTICE)

Dimensions in. (mm)



Model	A	B	C
V5-HD	47 (1194)	80 (2032)	144 (3658)
V5-HD EXP	47 (1194)	88 (2235)	138 (3505)
V5-SLP	50 (1270)	80 (2032)	107 (2718)
V5-XHD	47 (1194)	83 (2108)	148 (3759)
VNF-5	47 (1194)	83 (2108)	147 (3734)
V-6	47 (1194)	93 (2362)	147 (3734)
VS-6M	58 (1473)	93 (2362)	150 (3810)
VDC-1	36 (914)	51 (1295)	94 (2388)

Dimensions in. (mm)

Model	D	E	F
V5-HD	18 (457)	24 (610)	103 (2616)
V5-HD EXP	18 (457)	24 (610)	103 (2616)
V5-SLP	18 (457)	24 (610)	108 (2743)
V5-XHD	18 (457)	24 (610)	104 (2641)
VNF-5	18 (457)	24 (610)	104 (2641)
V-6	18 (457)	24 (610)	117 (2972)
VS-6M	18 (457)	24 (610)	117 (2972)
VDC-1	18 (457)	24 (610)	68 (1727)

