



# GORILLA<sup>®</sup>

## *Two Ram Baler*

### **Processes:**

Newspaper (ONP)  
Cardboard (OCC)  
High Grade Paper  
Solid Waste (MSW)  
Plastics (PET, HDPE, Film)  
Cans (Steel/Aluminum)  
White Goods  
Non-Ferrous Metals

The Harris Gorilla<sup>®</sup> Provides dense bales and high throughput for a variety of materials. Designed for easy operation and simple maintenance.





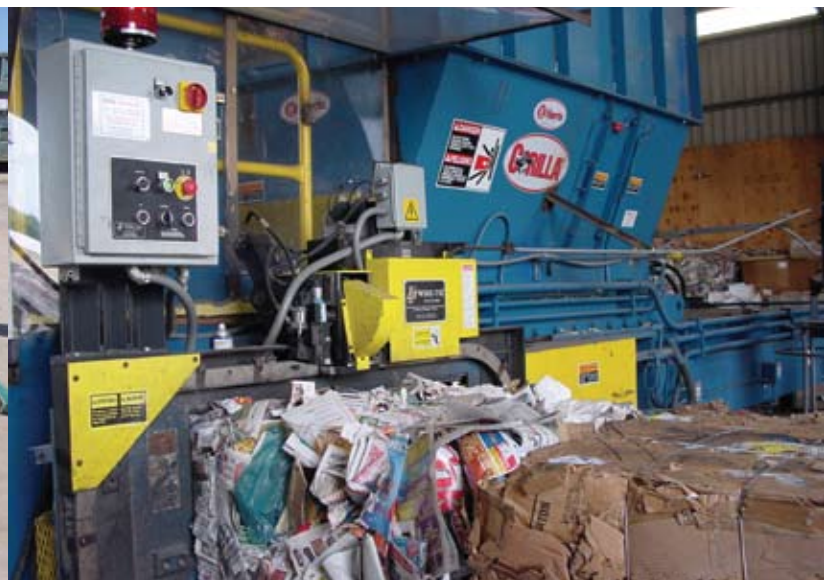
## Standard Features:

- 3500 PSI (241 bar) system operating pressure.
- Harris SmartKnife™ System.
- Shimless platen hold-down adjustment.
- High Quality Abrasion Resistant material replaceable liners including tongue and groove floor liners.
- Multi-Material controller with:
  - Phone modem
  - Operator Interface Display (OIT)
  - Diagnostics
  - English/Spanish display
- Heavy-duty main and eject cylinders incorporate Harris' designed heavy wall cylinder tubes, flame hardened cylinder rods and TFE piston seals.
- Full automatic operation on majority of materials.
- Heavy-duty uni-body frame construction.
- Interchangeable choice (by customer) of serrated or flat shear knife.
- Penetrating main ram, 60% penetration into the bale chamber.
- Plug bale compatible.
- Flooded suction power unit.
- 7 micron kidney loop filtration.
- Auto tier available in 11 or 12 gauge high tensile wire.
- Wye Delta main motor starting.
- 3 phase, 60 hz, 480 V electrical.
- Harris standard warranty.



## Options:

- Harris Combo Door™
- Hopper extension up to 96" (2438mm) high.
- Bale discharge table.
- Elevated operator's platform.
- Climate controlled operator's cab.
- Feed conveyors.
- CE rating.
- Alternative power unit locations.
- Other languages, electrical voltages, & options on request.



**Call today for more information**

770-631-7290

800-373-9131

[www.harrisequip.com](http://www.harrisequip.com)

\*All products and features are subject to change. Photos not necessarily representative of new equipment



Gorilla09