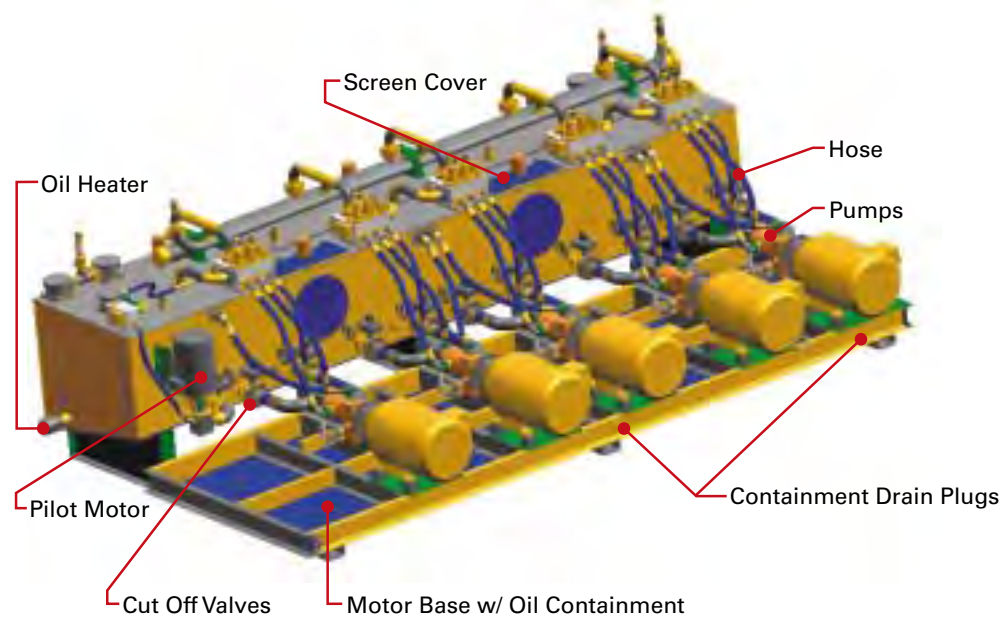


# TG Balers



Flooded suction tanks guarantee pump priming increasing pump life and eliminates dry start-ups.

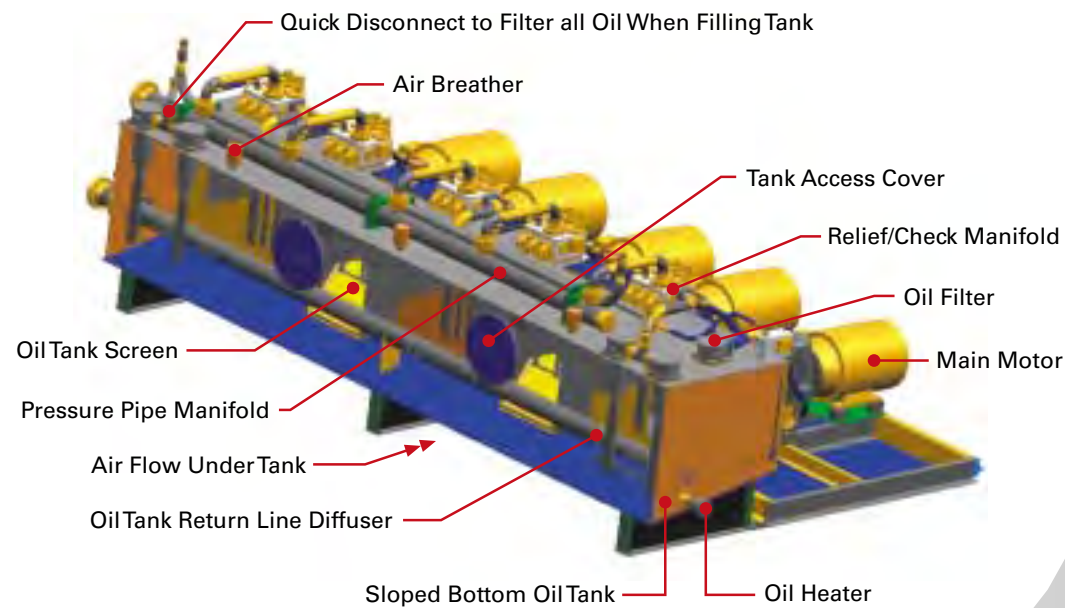
Same brand matched pumps are used for optimum flow and pressure.

Pumps and motors are more accessible with built in drip pan.

Kidney loop filtration/cooler pumps are positive displacement type for better filtration and cooling flow.

Increased use of heavy-duty hoses reduce vibration and noise.

Soft shift vents extend pump life by reducing shock and noise in the system.



## Processes

- ▼ Slitter coils
- ▼ Wire
- ▼ Industrial clips & skeletons
- ▼ Steel mill sheet
- ▼ Automobiles
- ▼ Railroad boxcar sides & roofs
- ▼ Selected structural steel
- ▼ Reinforcing rods

The TG line of ferrous balers is the industry standard for heavy-duty, high production, reliable baling systems. TG Balers compresses material into the charging box with a massive lid and utilizes a three-compression baling system to produce a bale.



Photos not necessarily representative of new equipment



(800) 373-9131



(770) 631-7290

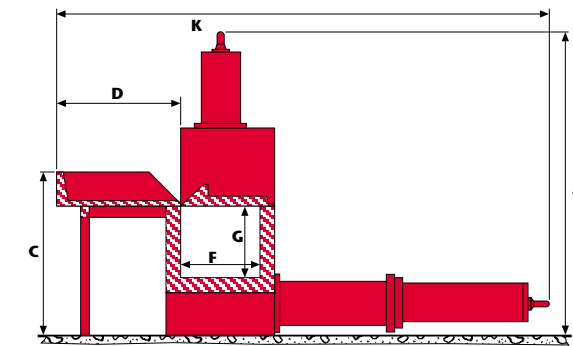
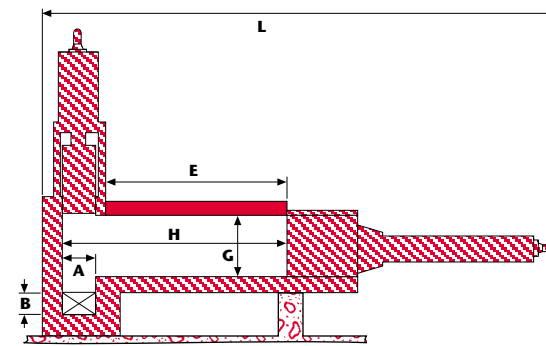
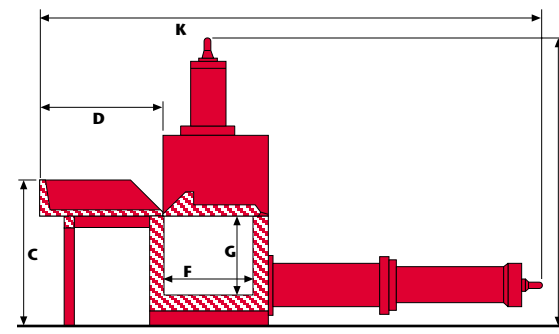
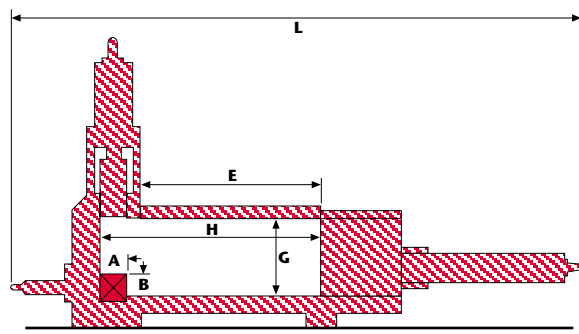


(770) 631-7299 FAX

200 Clover Reach Drive  
Peachtree City, GA 30269

(800) 373-9131  
(770) 631-7290

(770) 631-7299 FAX  
www.harriswaste.com



		TG-1218B	TG-1723B	TG-2229B	TG-4024B-4	TG-4036B	TG-6034B
<b>Application</b>		One auto less engine w/ frame attached or equivalent loose steel sheet and selected structural steel.	One auto less engine w/ frame attached or equivalent loose steel sheet and selected structural steel.	One auto less engine or equivalent industrial clips and skeletons, selected structural steel, industrial sheet, and trim stock.	Steel mill sheet (light coils excepted) RR box car sides and roofs--industrial clips and skeletons.	Steel mill sheet, selected coils, RR box car sides and roofs, industrial clips and skeletons.	Steel mill sheet & selected coils to 36" dia. (max.) RR box car sides & roofs, industrial clips & skeletons – selected structural steel, and selected reinforcing rod.
<b>Bale Size (A x B x Variable)</b>	<b>in mm</b>	24 x 24 x V 610 x 610 x V	24 x 24 x V 610 x 610 x V	24 x 24 x V 610 x 610 x V	24 x 24 x V 610 x 610 x V	28 x 24 x V 711 x 610 x V	36 x 24 x V 914 x 610 x V
<b>Bale Weight</b>	<b>lbs. kg</b>	960/24" cube 435.4/610mm cube	1000-1200/24" cube 454-544/610mm cube	1370/24" cube 621.4/610mm cube	1400/24" cube 635/610mm cube	1600/28x24x24" cube 725.8/711x610x610mm cube	2200/36x24x24" cube 997.2/914x610x610mm cube
<b>Bales per Hour** (100% efficient)</b>		49	52	48	44	48	38
<b>C Hopper Height</b>	<b>ft (m)</b>	10-10.25" (3.31)	10-10.25" (3.31)	10-4.25" (3.16)	11-10.5" (3.62)	11-10.5" (3.62)	16-6.5" (5.04)
<b>DxE Hopper Loading Area</b>	<b>ft m</b>	7.67 x 18 2.33 x 5.48	8.3 x 18 2.53 x 5.48	8.33 x 19.16 2.54 x 5.84	10 x 18.08 3.04 x 5.51	10 x 18.08 3.04 x 5.51	10.08 x 18.08 3.07 x 5.51
<b>FxE Charging Box Opening</b>	<b>ft m</b>	5 x 18 1.52 x 5.48	5 x 18 1.52 x 5.48	6.67 x 20 2.02 x 6.09	6.67 x 19 2.02 x 5.79	6.67 x 19 2.02 x 5.79	6.67 x 19 2.02 x 5.79
<b>FxGxH Press Box Dimensions</b>	<b>ft m</b>	5 x 5.83 x 21.33 1.52 x 1.77 x 6.5	5 x 5.83 x 21.33 1.52 x 1.77 x 6.5	6.67 x 5 x 23.33 2.02 x 1.52 x 7.11	6.67 x 5 x 23.34 2.02 x 1.52 x 7.112	6.67 x 5 x 23.67 2.02 x 1.52 x 7.21	6.67 x 6 x 24 2.02 x 1.82 x 7.32
<b>Press Box Volume</b>	<b>cu.ft cu.m</b>	622 18.66	622 18.66	777 23.31	780 23.4	780 23.4	960 27.2
<b>J* Overall Height</b>	<b>ft (m)</b>	20.3 (6.19)	20.3 (6.19)	21.3 (6.48)	21.3 (6.48)	21.3 (6.48)	33 (10)
<b>K* Overall Width</b>	<b>ft (m)</b>	31.2 (9.49)	31.5 (9.6)	38.7 (11.8)	42.2 (12.85)	42.2 (12.85)	48.2 (14.68)
<b>L* Overall Length</b>	<b>ft (m)</b>	55.1 (16.8)	55.1 (16.8)	60.4 (18.43)	60.5 (18.44)	60.5 (18.44)	64.2 (15.84)
<b>Horsepower</b>		200	200	300	400	400	400
<b>Approximate Weight</b>	<b>t (mt)</b>	146 (132)	150 (136)	225 (204)	332 (301)	322 (292)	438 (397)
<b>Hydraulic Data</b>							
<b>Main Hydraulic Pumps</b>		(4) 52 gpm @ 3500 psi 196.8 l/m @ 241 bar (4) 31 gpm @ 2200 psi 117.4 l/m @ 152 bar	(4) 52 gpm @ 3500 psi 196.8 l/m @ 241 bar (4) 63 gpm @ 1600 psi 238 l/m @ 110 bar	(6) 52 gpm @ 3200 psi 196.8 l/m @ 221 bar (6) 31 gpm @ 2200 psi 117.4 l/m @ 152 bar	(8) 53 gpm @ 3500 psi 200.6 l/m @ 241 bar (8) 60 gpm @ 1600 psi 227.1 l/m @ 110 bar	(8) 53 gpm @ 3500 psi 200.6 l/m @ 241 bar (8) 60 gpm @ 1600 psi 227.1 l/m @ 110 bar	(8) 53 gpm @ 3325 psi 200.6 l/m @ 229 bar (8) 60 gpm @ 1600 psi 227.1 l/m @ 110 bar
<b>Compression Cylinder</b>	<b>dia/force (metric)</b>	1. 12"/198t (305mm/179.6t) 2. 20"/549t (508mm/498.4t) 3. 20"/549t (508mm/498.4t)	1. 12"/198t (305mm/179.6t) 2. 20"/549t (508mm/498.4t) 3. 22"/665t (559mm/603t)	1. 16"/322t (406mm/292.1t) 2. 26"/850t (660mm/771.1t) 3. 26"/850t (660mm/771.1t)	1. 20"/550t (508mm/499t) 2. 30"/1237t (762mm/1122.2t) 3. 30"/1237t (762mm/1122.2t)	1. 20"/550t (508mm/499t) 2. 30"/1237t (762mm/1122.2t) 3. 30"/1237t (762mm/1122.2t)	1. 20"/522t (508mm/473.6t) 2. 34"/1509t (864mm/1369t) 3. 34"/1509t (864mm/1369t)
<b>Hopper Cylinder</b>	<b>dia/force (metric)</b>	9"/111t 229mm/107.7t	9"/111t 229mm/107.7t	9"/102t 229mm/92.5t	9"/111t 229mm/100t	8"/88t 203mm/79.8t	9"/106t 229mm/96.2t
<b>Lid Cylinder</b>	<b>dia/force (metric)</b>	10"/137t 254mm/124.3t	10"/137t 254mm/124.3t	10"/126t 254mm/114.3t	10"/137t 254mm/124.3t	10"/137t 254mm/124.3t	10"/131t 254mm/118.8t