



Wide-Mouth, Auto-Tie Horizontal Balers

Horizontal Balers from Harris

Used By:

Distribution Centers

Warehouses

Manufacturing Facilities

MRF Operators

Paper Converters

Paper Stock Dealers

Printers

Recycling Centers



Harris

**Call today for
more information**

770-631-7290

800-373-9131

www.harriswaste.com

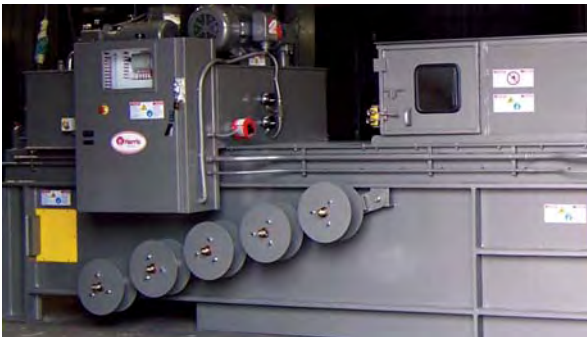
HARRIS

With a bale size of 42" x 42", the wide-mouth, auto-tie horizontal balers are ideal for MRF systems, large recycling facilities, and other multi-purpose baling applications. It is ideal for export bales, material conditioners and is available with a variety of options.

Features and Benefits

Structural

- Self Aligning Single Tension System - Robust heavy duty solid plate construction and self aligning tension cylinder and members provide even distribution of forces on all sides of the bale. Support members are interlocked into baler structure to eliminate high stress points in welds.
- Heavy Duty Bale Chamber – Massive 6"x6"x3/8" thick steel tubing with reinforced guides for strength and rigidity.
- Main Cylinder Support – Heavy duty support interlocked into side sections of the baler structure to remove high stresses in welds.
- "Uni-Body" Side Construction – One piece plate with solid reinforcing bars provides uniform load and stress distribution (loads are transmitted through solid plate rather than through welds). Material behind the ram falls directly to the floor and may be removed through openings provided at the rear, while the baler is operational. This eliminates accumulation of material behind the ram and the need to shut down the baler to remove guards and material.



- Replaceable AR 500 Brinell hardness wear liners.
- Adjustable platen hold down bars with AR500 wear strips.
- Heavy duty spring loaded bale retaining mechanisms.
- Adjustable shear blades with four knife edges.

Hydraulic Power Unit

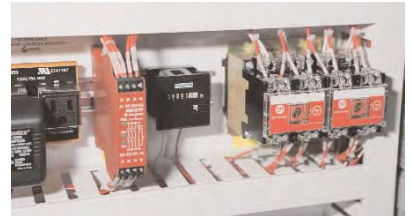
- Comprehensive range of power unit sizes.
- 3000 psi operating pressure.

Inserters and Twister

- Tube steel construction.
- Hinged twister assembly for easy access to twister hooks.
- Highly reliable twister and inserter drives and mechanisms.

Category 3 Safety System

- Safety monitoring relay. Continuously checks the status and function of safety interlocks and emergency stop devices.
- All access doors are provided with 3 pole magnetic safety rated interlock switches.
- Dual trapped key Interlock on hopper access door. Control power must be turned off to enable the key to be removed and placed into the dual key interlock. This enables the door latch to be opened and the personnel key to be removed. The person entering the baler keeps this key in his possession. The control power key cannot be removed and power restored until the personnel key is placed back into the interlock. Note this does not replace lock out and tag out procedure required by OSHA 1910.147.



Controls



- Touch screen color display with function keys and programmable logic controller. Program has 15 material selections and programmable settings.



Harris

Call today for
more information

770-631-7290

800-373-9131

www.harriswaste.com

Sales and Service By: